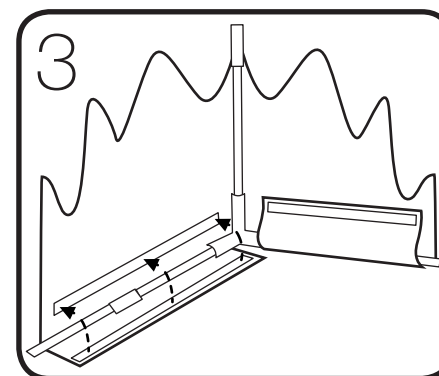
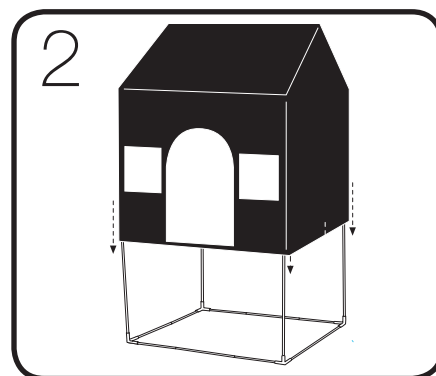
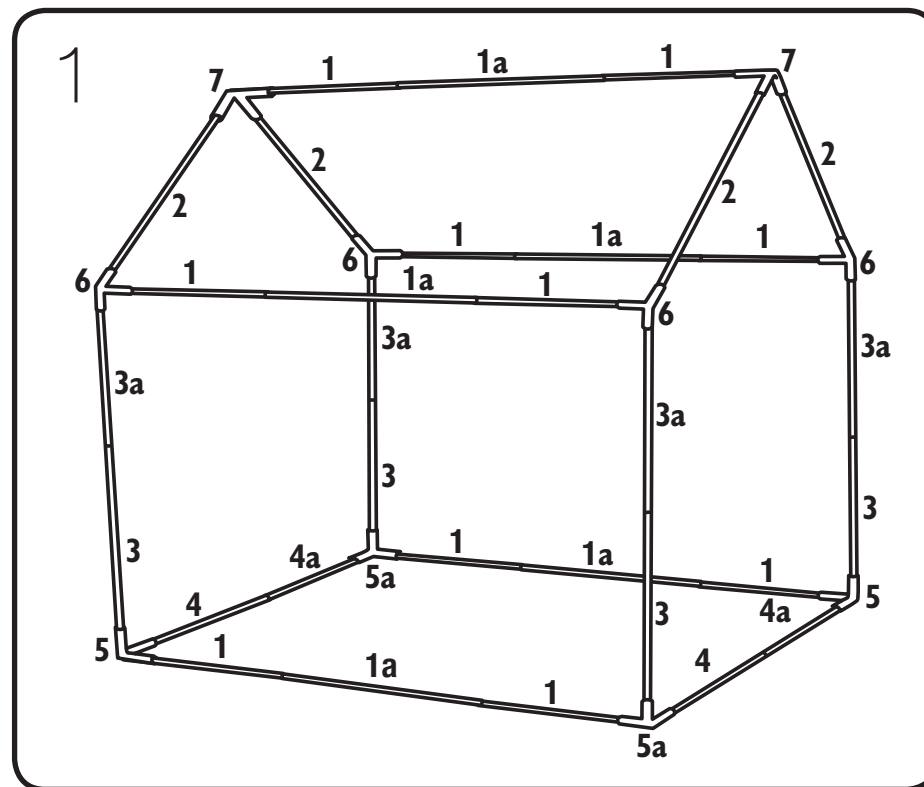


● PARTS LIST ●

PART	DIAGRAM	QTY
1		10
1a		5
2		4
3		4
3a		4
4		2
4a		2
5 / 5a		2 / 2
6		4
7		2
PLAYHOUSE SHELL & PLAYMAT		1
CORNER SECTIONS BAG		1
POLE BAG		1
STORAGE BAG		1



Here are a few suggestions to ensure that you get the maximum enjoyment and life from your Cotton Canvas House:

Assembly The putting up & taking down of this product should always be done by an adult. It is recommended that two adults assemble this product, due to its size & weight.

Surfaces To ensure that you get the maximum use and enjoyment from the product – do not set it up on concrete or other jagged and hard surfaces as these may tear the material around the frame. It is advisable to set it up only on soft surfaces like carpet or grass.

Safety Advice

WARNING! This product contains small parts **NEVER** let small children assemble or pack this product for storage.

ATTENTION! This product must only be used under adult supervision at all times.

WARNING! Keep away from fire.

NEVER allow a naked flame near this product – although it is made from fire retardant fabric, it will burn if left in continuous contact with a naked flame.

AFTER CARE: After assembly, check regularly to ensure all parts are secure and no damage has been sustained. If broken, discontinue use, as failure to do so may result in injury.

DO NOT leave outdoors in cold or wet weather. Store indoors in winter.

CLEAN ONLY with a damp cloth – other cleaning substances might render the flame-retardant coating ineffective.

NEVER shelter in this toy during a thunderstorm. This is not waterproof or made for camping.

DO NOT continue to use this toy if any part of the steel frame becomes bent or broken.

AGE: 3+

IMPORTANT: ADULT ASSEMBLY ONLY.

Please read this instruction leaflet fully before starting assembly.

■ Before you start, identify the parts & group poles of the same type together. For easy identification, the poles are labelled with a numbered sticker.

■ Divide the brackets as shown on Fig 1.

■ Put the framework together as shown in Fig 1. Please ensure parts 5 & 5a are in the correct order. It is essential to ensure all brackets are pushed firmly into each pole & the connector locks into the receiver. The first time you use the playhouse it may be necessary to gently knock the connectors into place.

■ Be careful to use the correct shape brackets for the base of the playhouse & for the roof.

■ Next, pull the fabric over the framework as shown in Fig 2. It is designed to be a tight fit, make sure the top of the roof is correctly in place and then work down to the base.

■ Finally, secure the fabric to the frame using the hook and loop strips around the roof and side poles (see Fig 3). Your pole tent is now ready for use!